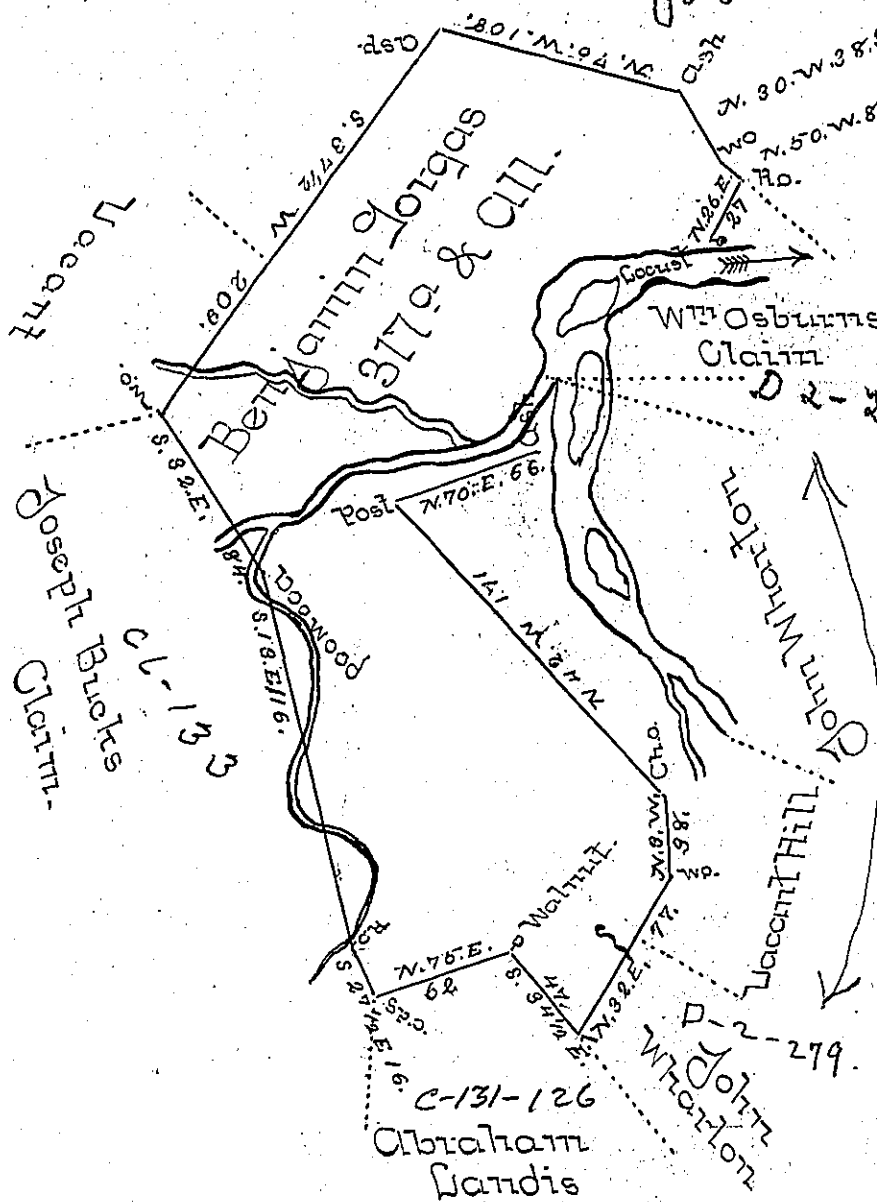


Johnston's Bottom tract Page 83



Courses and Distances down Stoney Creek from an Ash to a Locust

N. 7. 8. 34. 5. Mouth of Ben's Creek

N. 16. W. 27. p^s

N. 69. 8. 84. To Locust.

Total 145.5 p^s

Situate on the West side of Stoney Creek including the Mouth of Ben's Creek and Mill Creek in Luzerne Township Bedford County and surveyed the 12th day of May 1786. In Pursuance of a Warrant Dated the 5th day of July 1784 -

By John Lukens Esq: Secy.

George Woods
— D.S.

IN TESTIMONY that the above is a copy of the original remaining on file in the Department of Internal Affairs of Pennsylvania, made conformably to an Act of Assembly approved the 16th day of February, 1833, I have hereunto set my Hand and caused the Seal of said Department to be affixed at Harrisburg, this

— Second — day of — November — 1897 —



James W. Pitta
Secretary of Internal Affairs.